

State of Wyoming Corner Record

(In compliance with the *CORNER PERPETUATION AND FILING ACT*, Wyoming Statutes, 1997 Section 33-29-140 et. seq., and the Rules and Regulations of the Board of Professional Engineers and Professional Land Surveyors)

Reverse side of this form may be used if more space is needed.

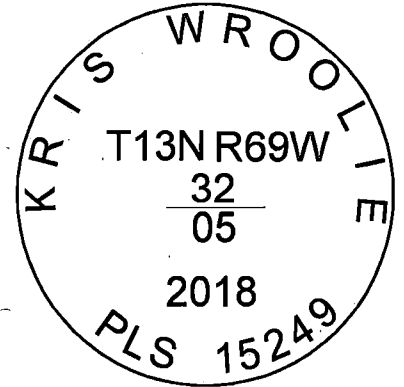
Record of original survey and citation of source of historical information (if corner is lost or obliterated). Description of corner monumentation evidence found and/or monument and accessories established to perpetuate the location of this corner. Sketch of relative location of monument, accessories, and reference points with course and distance to adjacent corner(s) (if determined in this survey). Method and rationale for reestablishment of lost or obliterated corner.

LOCATION: *South Quarter Corner of Section 32, T.13N, R.69W, 6th Principal Meridian, Laramie County.*

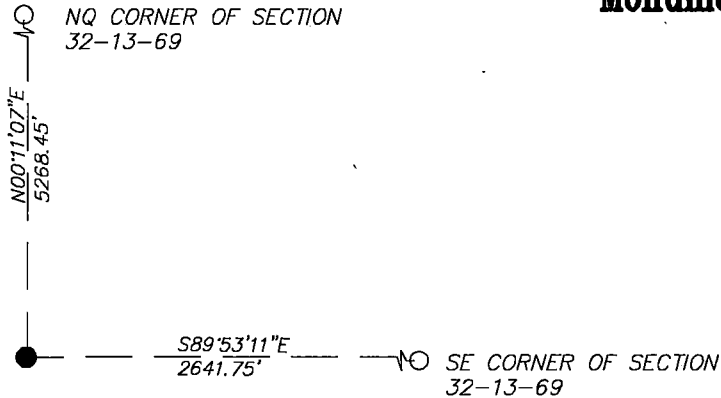
RECORD: *GLO: Set granite stone 12x10x5.*

RECOVERED: *Searched area and found nothing.*

RESET: *Set aluminum cap stamped LS15249 at lost position between 32SW and 32SE. Additional ties were made to adjacent section corners.*



Monument Inscription



Date of Field Work: 12/15/18

Office Reference: 14261

Cross Index Plat

	1	2	3	4	5	6	7	8	9	10	11	12	13	14	15	16	17	18	19	20	21	22	23	24	25		
A																											A
B	+	+	+	+	+	+	+	+	+	+	+	+	+	+	+	+	+	+	+	+	+	+	+	+	+	+	B
C		6			5				4					3					2						1		C
D	+	+	+	+	+	+	+	+	+	+	+	+	+	+	+	+	+	+	+	+	+	+	+	+	+	+	D
E																											E
F	+																										F
G																											G
H	+	7																									H
J																											J
K	+	+	+	+	+	+	+	+	+	+	+	+	+	+	+	+	+	+	+	+	+	+	+	+	+	+	K
L																											L
M	+	18																									M
N																											N
O	+																										O
P																											P
Q	+	19																									Q
R																											R
S	+																										S
T																											T
U	+	30																									U
V																											V
W	+																										W
X																											X
Y	+	31																									Y
Z																											Z
	1	2	3	4	5	6	7	8	9	10	11	12	13	14	15	16	17	18	19	20	21	22	23	24	25		

Firm/Agency, Address

Westwood Professional Services
3701 12th St. N. Ste. 206
St. Cloud, MN 56303

Telephone Number: (320)-253-9495

This corner record was prepared by me or under my direction and supervision.

SEAL & SIGNATURE



Corner Name South Quarter Corner Section 32, T 13 N, R 69 W, 6th P.M. Cross-Index No.: Z-07

County: Laramie Wyoming

SBRPEPLS/PLSW: March 1994; PLSW January 1998



RECP #: 752179

RECORDED 5/1/2019 AT 2:35 PM BK# 2619 PG# 2492
Debra K. Lee, CLERK OF LARAMIE COUNTY, WY PAGE 1 OF 1